

# Vallejo Scenics

Resin bases and accessories for modeling projects

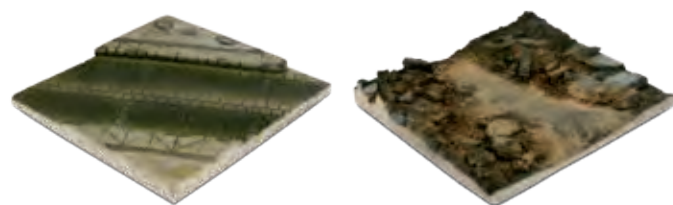


ACRYLICOS VALLEJO, S.L.  
08800 Vilanova i la Geltrú  
Barcelona (Spain)  
Tel. +34 93 893 60 12  
Fax +34 93 893 11 54  
www.acrylicosvallejo.com  
info@acrylicosvallejo.com

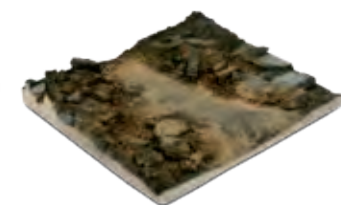
Follow us on / Síguenos en:



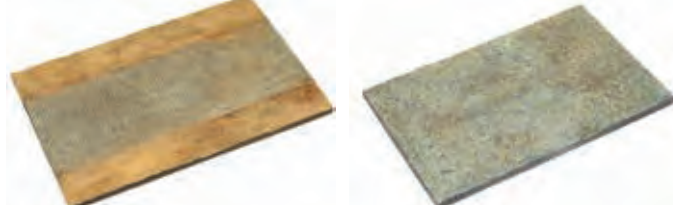
Pictures courtesy by Javier Franco



**SC001**  
Paved street section  
Base urbana  
14x14 cm / 5,5x5,5 in  
Scale 1/35

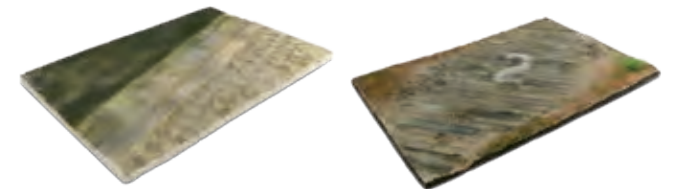


**SC002**  
Rubble street section  
Base escombros  
14x14 cm / 5,5x5,5 in  
Scale 1/35



**SC105**  
Cobblestone road  
Camino empedrado  
25x17 cm / 9,84x6,69 in  
Scale 1/35

**SC110**  
Cobblestone street  
Calle adoquinada  
24,5x16 cm / 9,64x6,29 in  
Scale 1/35



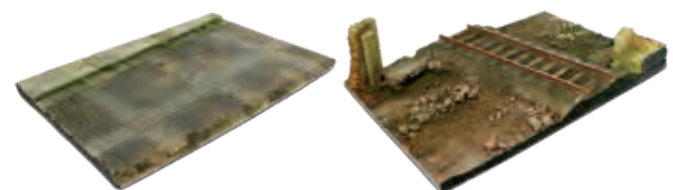
**SC101**  
Paved street section  
Base urbana  
31x21 cm / 12,20x8,26 in  
Scale 1/35

**SC102**  
Wooden airfield surface  
Base aérea de madera  
31x21 cm / 12,20x8,26 in  
Scale 1/35



**SC003**  
German ruined building  
Edificio alemán en ruinas  
15,5x15,5 cm / 6,10x6,10 in  
Scale 1/35

**SC004**  
Street corner with waterpump Normandy  
Esquina con fuente de agua - Normandía  
15,5x15,5 cm / 6,10x6,10 in  
Scale 1/35



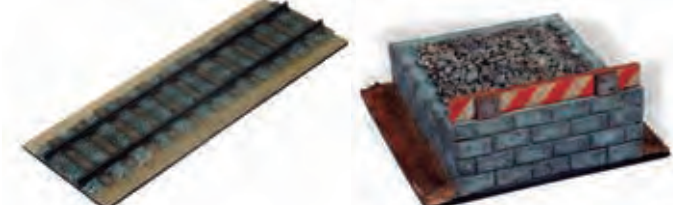
**SC103**  
Cobblestone street with drain  
Base empedrado con alcantarilla  
31x21 cm / 12,20x8,26 in  
Scale 1/35

**SC104**  
Country road with railway  
Via férrea con camino rural  
31x21 cm / 12,20x8,26 in  
Scale 1/35



**SC107**  
Factory facade  
Fachada entrada fábrica  
31x16x20 cm / 12,20x6,29x7,87 in  
Scale 1/35

**SC108**  
French street section  
Calle francesa  
24x23x21 cm / 9,44x9,05x8,26 in  
Scale 1/35



**SC111**  
Railway  
Vía de tren  
29x10,7x1,5 cm / 11,41x4,21x0,59 in  
Scale 1/35

**SC120**  
Railroad buffer block  
Tope de vía  
11x11x5,5 cm / 4,33x4,33x2,16 in  
Scale 1/35



**SC112**  
French house corner  
Esquina de casa francesa  
25x11x12 cm / 9,84x4,33x4,72 in  
Scale 1/35

**SC113**  
Factory gate  
Portón de fábrica  
27,5x27,5x20,5 cm / 10,82x10,82x8,07 in  
Scale 1/35



**SC114**  
French café  
Café francés  
25,5x15,1x13 cm / 10,03x5,94x5,11 in  
Scale 1/35

**SC115**  
Dock section  
Muelle embarcadero  
21,5x12x5,5 cm / 8,46x4,72x2,16 in  
Scale 1/35



**SC116**  
Factory corner  
Esquina de fábrica  
15x15x11,5 cm / 5,90x5,90x4,52 in  
Scale 1/72

**SC117**  
French house corner  
Esquina de casa francesa  
12,5x7x7 cm / 4,92x2,75x2,75 in  
Scale 1/72



**SC118**  
Factory gate  
Portón de fábrica  
10,5x17x11,3 cm / 4,13x6,69x4,44 in  
Scale 1/72

**SC119**  
French street  
Calle francesa  
14x14x13,5 cm / 5,51x5,51x5,31 in  
Scale 1/72

EN. Not suitable for children under 14 years. Please note that some of the listed models require assembly. ES. No recomendado para menores de 14 años. Algunas referencias requieren montaje de algunos elementos.



# Vallejo Scenics

**EN** Vallejo Scenics is a range of diorama bases and accessories. The assortment includes reproductions in 1/35 and 1/72 scale of urban elements, modern, as well as from WWII, designed to provide the setting and details for vignettes and dioramas. The Scenics products are suitable for use as simple bases or can be further enriched with shrubbery, trees, telegraph posts, street lights, military equipment and figures, or with sections of ruined walls and buildings. The bases and accessories are precast in a lightweight resin which has a matt white finish and is easy to cut and adapt to different sizes; the material permits sanding and painting as well as any further weathering processes.

**ES** Vallejo Scenics es una gama de bases y accesorios para dioramas. El surtido incluye reproducciones a escala 1/35 y 1/72 de escenarios, así como complementos urbanos tanto modernos, como de la Segunda Guerra Mundial, diseñados para detallar y ambientar dioramas y maquetas. Las diferentes bases pueden utilizarse para ubicar figuras y vehículos, además de tantos complementos como el modelista decida; secciones de edificios, ruinas, muros, ambientación natural, árboles, postes telegráficos, farolas, etc. Las piezas han sido moldeadas en una resina ligera, fácil de cortar y lijar, presenta un acabado blanco mate que facilita la aplicación de pintura y los procesos de envejecido.



**SC201**  
German fuel drums (no. 1)  
*Bidones de gasolina alemanes (núm. 1)*  
4 units - Scale 1/35



**SC202**  
German fuel drums (no. 2)  
*Bidones de gasolina alemanes (núm. 2)*  
4 units - Scale 1/35



**SC209**  
Modern gas bottles  
*Bombonas de gas modernas*  
12 units - Scale 1/35



**SC210**  
Modern plastic drums (no. 1)  
*Bidones de plástico modernos (núm. 1)*  
4 units - Scale 1/35



**SC217**  
Urban street poles (no. 2)  
*Bolardos urbanos (núm. 2)*  
6 units - Scale 1/35



**SC218**  
Höckerhindernis "Type 38"  
(Anti-tank barriers)  
*Dientes de dragón "Tipo 38"*  
4 units - Scale 1/35



**SC225**  
Wooden barrels  
*Barriles de madera*  
5 units - Scale 1/35



**SC226**  
Metal suitcases  
*Maletines metálicos*  
4 units - Scale 1/35



**SC233**  
Wooden pallets  
*Palets de madera*  
4 units - Scale 1/35



**SC301**  
Broken palm trunks  
*Troncos rotos de palmera*  
5 units - Scale 1/35



**SC203**  
Civilian fuel drums  
*Bidones de gasolina de uso civil*  
4 units - Scale 1/35



**SC204**  
Modern fuel drums  
*Bidones de gasolina modernos*  
4 units - Scale 1/35



**SC211**  
Assorted modern plastic drums (no. 2)  
*Surtido bidones de plástico modernos (núm. 2)*  
4 units - Scale 1/35



**SC212**  
Garbage bins (no. 1)  
*Cubos de basura (núm. 1)*  
3 units - Scale 1/35



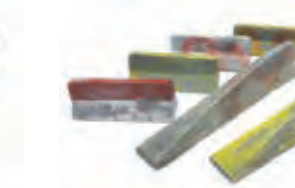
**SC219**  
Höckerhindernis (Anti-tank barriers)  
*Dientes de dragón*  
6 units - Scale 1/35



**SC220**  
Trident anti-tank obstacle  
*Obstáculo antitanque tetrapodo*  
2 units - Scale 1/35



**SC227**  
Wicker suitcases  
*Maletas de mimbre*  
4 units - Scale 1/35



**SC228**  
Urban concrete barriers  
*Barreras de cemento urbanas*  
6 units - Scale 1/35



**SC302**  
Palm stumps  
*Tocones de palmera*  
5 units - Scale 1/35



**SC303**  
Large tree stumps  
*Tocones grandes de árbol*  
4 units - Scale 1/35



**SC005**  
Old brick wall  
*Muro de ladrillo*  
15x10 cm/5,9x3,93 in  
1 unit - Scale 1/35



**SC006**  
Village gate  
*Portón de madera*  
15x15 cm/5,9x5,9 in  
1 unit - Scale 1/35



**SC205**  
Wehrmacht fuel drums  
*Bidones de gasolina de la Wehrmacht*  
4 units - Scale 1/35



**SC206**  
Allied Forces jerrycan set  
*Bidones de gasolina de las Fuerzas Aliadas*  
12 units - Scale 1/35



**SC213**  
Assorted garbage bins (no. 2)  
*Cubos de basura (núm. 2)*  
4 units - Scale 1/35



**SC214**  
Concrete barriers  
*Barreras de cemento*  
4 units - Scale 1/35



**SC221**  
Large ammo boxes 12,7 mm  
*Cajas grandes de munición de 12,7 mm*  
10 units - Scale 1/35



**SC222**  
Panzerfaust 60 M set  
*Set Panzerfaust 60 M*  
11 units - Scale 1/35



**SC229**  
Roof tiles set  
*Set de tejas*  
5 g - Scale 1/35



**SC230**  
Damaged roof section and tiles  
*Tejas y sección tejado en ruinas*  
1+12 units - Scale 1/35



**SC304**  
Fallen logs  
*Troncos caídos*  
3 units - Scale 1/35



**SC305**  
Stumps with roots  
*Tocones con raíz*  
4 units - Scale 1/35



**SC106**  
Ardennes village wall  
*Muro de las Ardenas*  
24x7 cm/9,44x2,75 in  
1 unit - Scale 1/35



**SC109**  
Normandy village  
*Muro de Normandía*  
24x7 cm/9,44x2,75 in  
1 unit - Scale 1/35



**SC207**  
German jerrycan set  
*Set de bidones de gasolina alemanes*  
12 units - Scale 1/35



**SC208**  
IDF jerrycan set  
*Set de bidones de gasolina IDF*  
12 units - Scale 1/35



**SC215**  
Damaged concrete barriers  
*Barreras de cemento dañadas*  
4 units - Scale 1/35



**SC216**  
Urban street poles (no. 1)  
*Bolardos urbanos (núm. 1)*  
6 units - Scale 1/35



**SC223**  
Universal metal cases  
*Cajas metálicas universales*  
7 units - Scale 1/35



**SC224**  
WWII German food containers  
*Contenedores de comida alemanes WWII*  
4 units - Scale 1/35



**SC231**  
Cobblestone set  
*Ladrillos coloreados*  
40 g - Scale 1/35



**SC232**  
Coloured bricks  
*Ladrillos coloreados*  
40 g - Scale 1/35



**SC306**  
Small stumps  
*Tocones pequeños*  
5 units - Scale 1/35



**SC307**  
Large fallen trunk  
*Tronco caído grande*  
1 unit - Scale 1/35